

# Sika·Design<sup>®</sup>

HANDMADE FURNITURE



## RATTAN







# CONTENT

4 - 7	OUR HISTORY
8 - 9	SUSTAINABILITY
10 - 13	OUR DESIGNERS
14 - 35	ICONS
36 - 81	ORIGINALS
82 - 93	AFFAIRE
94 - 106	INFO AND PRODUCT OVERVIEW

# SIKA-DESIGN

## A PROUD TRADITION OF CRAFTSMANSHIP

### Our history

The story of Sika-Design begins in 1942, when Ankjær Andreasen produced the first batch of handmade baskets, lamps, flower tables and other smaller interior items made of rush and willow. In the 1950's the production was extended to include a series of handmade furniture made from rattan, and the company Sika-Design was firmly established. Our passion for rattan and craftsmanship dates back several decades and makes us Scandinavia's oldest producer of rattan and wicker furniture.

### 3<sup>rd</sup> generation

Sika-Design is a danish family company with 3<sup>rd</sup> generation, Louise Andreasen in charge. Ankjær Andreasen's son, Knud Andreasen, took over the company in 1983, and Ankjær continued his daily inspections until his death in 1997. Louise and her father Knud have since 1996 worked side by side bringing Sika-Design into the new century with great designs, while never letting go of our strong heritage of great craftsmanship. In 2013 Louise Andreasen took over the company and became CEO of Sika-Design. Knud is still working in the company and is an important asset, as he is continuingly passing on the Sika-Design company culture and heritage to the next generations.

### Core values

At Sika-Design we have a passion for rattan, craftsmanship and sustainability. Rattan gives us endless possibilities because of its flexibility and as one of the most sustainable materials for furniture. We treasure rattan and its unique qualities to handcraft amazing furniture. Our mission is to manufacture furniture which can last for decades, both when it comes to design and durability.

### Social responsibility

All Sika-Design's furniture are manufactured in our factories in Indonesia. Our products are made with care for the environment and the well-being of people. The production is committed to a healthy environmental policy and an ongoing focus on improving the working conditions.

Sika-Design is certified by ISO14001:2015 and SMETA by DNV-GL. This is your guarantee that we are committed to protect people and the environment. We have always been dedicated to these ideals and we were one of the first furniture companies in Denmark to be certified and started working systematically with them more than 10 years ago.



# A passion for rattan

DESIGNS BY 3 GENERATIONS

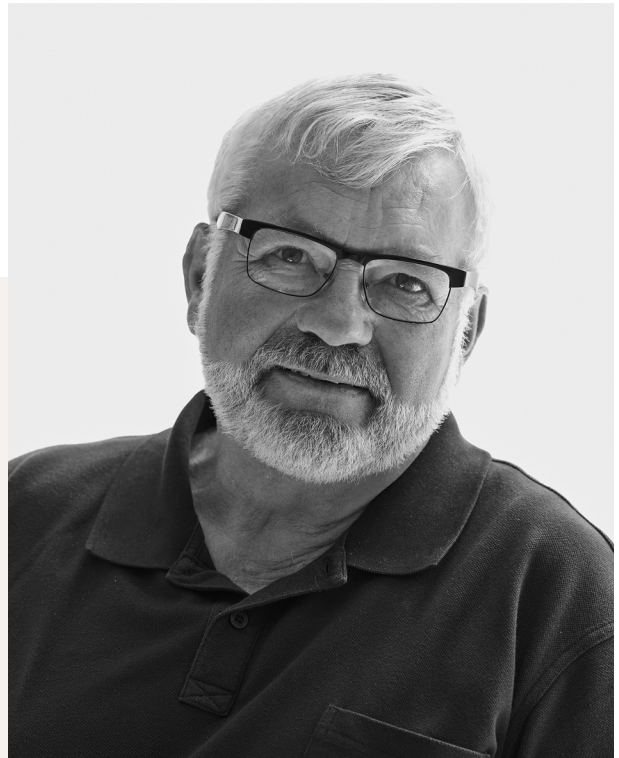


## Louise Andreasen (1971-)

Louise Andreasen is the 3<sup>rd</sup> generation to run Sika-Design. She has worked side by side with her father Knud since 1996 and she took over the ownership of the company and the role of CEO in 2015. Louise is very conscious about inheriting a company with a strong culture characterized by freedom with responsibility. She is determined to preserve and continue this culture created by her father and grandfather. Louise has from a very young age been passionate about furniture production and interior design. Her strong imprint in the company has been insisting to create furniture in the natural material rattan and to rejuvenate rattan furniture from iconic designers and architects.

## Knud Andreasen (1948-)

Knud Andreasen took over his father's company in 1983. Over three decades, Knud has developed a strong worldwide distribution and made solid manufacturing partnerships in Indonesia and Malaysia. In 1989 he founded Sika-Design's associated company Cane-Line A/S and in 1991, he acquired the Danish competitor Horsnæs and merged it with Sika. Knud was a pioneer when he introduced the game changing material ArtFibre on the European market in the late 1990's. Knud has always insisted on great comfort and strength when designing and producing furniture. Especially furniture designed for hospitality has been one of Knud's core focus areas.



## Ankjær Andreasen (1911-1997)

Ankjær Andreasen established the company Sika Møbler in 1942. He was a true entrepreneur at heart and had previously run a hotel, created an entire housing area and arranged spectacular motorcycle races. He was a man full of ideas and imagination. In the beginning Ankjær produced wicker baskets, lampshades and small pieces of rattan furniture at home, but the business quickly grew and in 1951 he established a cane and rattan manufacturing company on Funen in Denmark. In 1972, Ankjær went on a trip to the far east and when he returned, he had bought a piece of land and established a rattan furniture production in Malaysia which quickly grew to 150 men.

# Sustainability

A CORE VALUE CLOSELY WOVEN INTO SIKA-DESIGN'S HISTORY

As one of the world's oldest and largest producers of rattan furniture, sustainability has always been a part of Sika-Design's DNA. Rattan is one of the most ecological materials that is available to us, because of its fast growth and ability to regenerate. Since 1942, rattan has been fundamental in a sustainable furniture production for Sika-Design.

In recent years, rattan has experienced a growing revival. This growth is playing an integral part in the UN's Sustainable Development Goals and the going green awareness. At Sika-Design, we are delighted to be contributing to this growth and revival. Join us in our world of sustainable furniture made from rattan.





# Rattan

## A MATERIAL THAT EMBRACES THE RAINFOREST

- Rattan is the second fastest growing material for furniture production. It regenerates in the span of 5 to 7 years.
- Rattan contributes to preserve the rainforest, as the plant grows like vines on the trees.
- Rattan absorbs CO<sub>2</sub> and generates clear air and produces up to 35 % more oxygen than a tree.
- Rattan is solid in opposition to hollow bamboo. It is strong, bendable and very durable, which makes it perfect for furniture production.
- Rattan is nearly impossible to wear out and it can last for many generations.
- 80 % of the world's rattan resources grow in Indonesia near Sika-Design's factories.
- Rattan is environmentally friendly and easy to work with. The rattan stem only needs to be steamed for 10-15 minutes, before it can be formed.
- All furniture from Sika-Design is handcrafted, using few machines in the process.
- Glue is not necessary in the production and Sika-Design only uses toxin free varnishes.
- Rattan comes in 600 different variants and from these 40 can be used in the production of furniture. Sika-Design only uses the best quality which is called Tohiti and Manau.



# Our iconic designers

PIONEERS WITHIN RATTAN AND FURNITURE DESIGN

Arne Jacobsen, Nanna & Jørgen Ditzel, R. Wengler, Franco Albini & Franca Helg, Viggo Boesen and Tove Kindt-Larsen were all pioneers of their time. They broke new ground when they made experimental shapes of the sturdy material rattan and wicker, creating sculptural and timeless icons.

At Sika-Design we are proud to have acquired the rights for these iconic designs. It is very important for us to work closely with the descendants to ensure the design and quality of the furniture, so they can continue their entitlement in the design world.



*"Great design for us is design that last for generations and that stays strong and beautiful"*



## Arne Jacobsen

Arne Jacobsen was a renowned Danish architect, who first hoped to become a painter. He was later admitted to the Architecture School at the Royal Danish Academy of Fine Arts from 1924 to 1927. Still a student, in 1925 he participated in the Paris Art Deco fair, Exposition Internationale des Arts Décoratifs et Industriels Modernes, where he won a silver medal for his first furniture design.

In 1929, he won a Danish Architect's Association competition for designing the "House of the Future" which was built in full scale for the Housing and Building Exhibition in Forum Copenhagen. Arne Jacobsen was revered as one of the most visionary and progressive Danish architects of his time.

## Tove Kindt-Larsen

Tove Kindt-Larsen was together with her husband Edvard one of Denmark's most prominent designers from the 1930's to the 1960's. Tove was educated at the Academy of Fine Arts in Copenhagen and had already before her marriage to Edvard worked with furniture drawing.

Together with her husband they were a strong design-duo and their work was characterized by contrasts and simplicity, as well as a high sense of quality and appreciation of current trends. They covered areas such as architecture, furniture design, silverware and textiles.



## Nanna & Jørgen Ditzel

The Danish designer Nanna Ditzel, together with her husband Jørgen, exhibited their first furniture designs in Copenhagen, while they were still students at the Industrial Arts and Crafts College, Copenhagen. They quickly established their own design studio and started to work with wicker in cooperation with the renowned wicker worker R. Wengler in 1950. The rocking chair Nanny was one of the first chairs based on the idea of a chair with no legs.

For a short period, Nanna also studied under the leading danish furniture designer Kaare Klint at the Royal Danish Academy of Fine Art's furniture school. Among Nanna Ditzel's designs are textiles for Kvadrat and silverware for Georg Jensen.



## Franco Albini & Franca Helg

Italian Franco Albini and Franca Helg started working together in 1952. Franco was an Italian Neo-Rationalist architect and designer, and he began his professional career working for Gio Ponti. He obtained three Compasso d'Oro awards, which is the most prestigious Italian design prize.

Franca was also an Italian designer and architect graduated from Politecnico di Milano. Franco and Franca were active both in the field of furniture, architectural planning and in industrial design. Together they designed many creations with the new forms of modernism.

## Viggo Boesen

Viggo Boesen is a Danish architect who contributed to the Danish design aesthetics in the 1930's. From his workshop Viggo designed a number of rattan and upholstery furniture, which was constructed according to his philosophy: Furniture should have an organic flow and embrace the body smoothly and tenderly. They should be a delight to the eye, but also be solid and durable.

The Fox chair was the first of many furniture pieces from Viggo Boesen and with that he won the design competition, held by the Danish wicker-maker guild in 1936. His inspiring, imaginative designs made him unique and put him among the designers of the "Danish Golden Age."



## R. Wengler

Robert Wengler was known as the best wicker maker in Denmark and was appointed purveyor to Her Majesty. Many, now famous, architects came to his workshop to get knowhow and understanding about weaving and wicker work. Among those were Danish architects Arne Jacobsen, Viggo Boesen, Nanna & Jørgen Ditzel and Kay Bojesen. They had many of their prototypes made in R. Wenglers workshop in Copenhagen.

R. Wengler was a pioneer in rattan production. What he did to the craftsmanship and the way he challenged the material, lays the groundwork for the way we know rattan furniture today.





# ICONS

## ICONIC PIECES BY CREATIVE ARTISANS

With our ICONS Collection, we at Sika-Design, revitalize iconic pieces of furniture from some of Europe's most skilled and important architects and designers.

Arne Jacobsen, Nanna & Jørgen Ditzel, R. Wengler, Franco Albini & Franca Helg, Viggo Boesen and Tove Kindt-Larsen were all pioneers of their time and it is with great respect and admiration for the original designs that this collection is made.

# Charlottenborg

BY ARNE JACOBSEN

Arne Jacobsen designed this charismatic lounge chair in 1936. He showcased it for the first time at the Charlottenborg spring exhibition in 1937 and since then named after the castle. The chair was originally named A.J 237 and was part of a series of original rattan chairs. It is a known fact, that the Charlottenborg chair was one of Arne Jacobsen's favourite lounge chairs in his famous vacation home Knarken near Sejroebugten in Denmark.

CHARLOTTENBORG CHAIR | ITEM NO: AJ-25-SU CHARLOTTENBORG TABLE | ITEM NO: AJ-45-SU







# Paris

BY ARNE JACOBSEN

The Paris chair was designed by Arne Jacobsen in 1929 for a competition published by The Basket Makers Association. When he later the same year exhibited with the famous "The House of the Future", the chair was displayed as a part of the interior design. Until World War II, the chair was produced by R. Wengler and it is known both as Fremtidens Stol, Skovsneglen and Paris Chair.



- CHARLOTTENBORG CHAIR | ITEM NO: AJ-25-SU
- CHARLOTTENBORG 2-SEATER | ITEM NO: AJ-35-SU
- CHARLOTTENBORG TABLE | ITEM NO: AJ-45-SU
- OTTOMAN SMALL | ITEM NO: FA-55-SU





BELLADONNA SOFA | ITEM NO: FA-95-SU  
OTTOMAN BIG | ITEM NO: FA-65-SU  
OTTOMAN SMALL | ITEM NO: FA-55-SU



# Belladonna & Ottoman

BY FRANCO ALBINI &  
FRANCA HELG

In 1951 the Italian duo Franco Albini & Franca Helg designed the Belladonna sofa and the Ottoman. The Belladonna has a very elegant expression with its fine open weave and the beautiful curved back. The construction gives the impression that the seat sits on a pedestal, which gives the sofa an almost majestic aura. The Ottoman truly distinguishes itself as an all-round multipurpose furniture and is both sculptural and elegant.

*Franco Albini*



# Luna & Fratellino

BY FRANCO ALBINI & FRANCA HELG

The original design of the Luna chair dates back to 1967. This futuristic design, originally named "Radar", was made with reference to The Space Race, which greatly influenced fashion and design during the 1960's. Fratellino is the Italian word for "little brother" and it was designed in 1951 as a small bar trolley. It challenges the rattan material to the maximum with the tree dimensional curved rattan poles.

FRATELLINO TROLLEY | ITEM NO: FA-23-SU



*Nanna Ditzel*



HANGING EGG CHAIR | ITEM NO: ND-75-CU



# Hanging Egg

BY NANNA & JØRGEN DITZEL

The Hanging Egg Chair is a critically acclaimed design that has enjoyed praise worldwide ever since the distinctive sculptural shape was created by Nanna & Jørgen Ditzel in 1959. The chair is designed on the basis of the body and it is one of the first chairs based on the idea of integrating a shell on a frame as one piece.

It is a Scandinavian classic and is one of the most known iconic designs from Denmark. In 2014 Sika-Design acquired the manufacture rights after an Italian company. The Hanging Egg Chairs is commonly used for both private and hospitality projects by architects and designers all over the world.



# Chill

BY NANNA DITZEL

The beautiful rattan lounge chair Chill, with complementary footstool, was designed in the late summer of 1961. It was the first piece of furniture Nanna Ditzel created after her husband's death in 1961. Chill is an almost sculptural installation that effortlessly integrates body and furniture.

The chair along with the footstool ties an organic design language with minimalistic features and suggests indulgence and relaxation - whether it is for indoor or outdoor use. The original name was "Kaminstolen" and it was used in Nanna Ditzel's private vacation home for more than 40 years.





# Madame

BY NANNA & JØRGEN DITZEL

In 1951 Nanna & Jørgen Ditzel designed the Madame chair. Like the Hanging Egg it is one of the first chairs based on the idea of integrating a shell on a frame as one piece. With a feminine and functional aesthetic, the Madame Chair is a prime example of Ditzel's work.

# Rana





NANNY ROCKING CHAIR | ITEM NO: ND-15-SU



FOXCHAIR | ITEM NO: VB-11-SU

# Fox & Teddy

BY VIGGO BOESEN

The Fox chair is a statement lounge chair for both modern and contemporary living spaces. In 1936 Viggo Boesen won the design competition, that the Danish wicker-maker guild held, with his Fox chair.

The same year Viggo Boesen designed the Teddy lounge chair and stool. The chair was named because of its strong design resembling a bear hug, which complements the appearance and feeling when leaning back in the chair.



# Tulip

BY TOVE KINDT-LARSEN

The Tulip chair and sofa was designed by Tove Kindt-Larsen and was originally produced by R. Wengler in the 1940's. The chair has unified comfort, craftsmanship and a timeless design. 70 years after it was designed it is still relevant and the chair's elegant and feminine look is a great example of the talent Tove had for furniture design.







# Fleur

BY R. WENGLER

The Fleur chair is an elegant dining chair designed by Robert Wengler as early as 1902. It manages to appear artfully delicate while showcasing the versatility and durability of the rattan material.



FLEUR CHAIR | ITEM NO.: WG-17-PU



WENGLER CHAIR | ITEM NO: WG-12-PU

# Wengler

BY R. WENGLER

The Wengler chair is an elegant dining chair designed by and named after Robert Wengler. The chair was designed back in 1901 and is the oldest design in our ICONS collection.

# Originals

DESIGNS BY 3 GENERATIONS

The Originals collection is as the name implies made of Sika-Design's own original designs. Some of the designs are made from our own design sketches and others from successful models from the 1950's and 1960's. The collection is growing each year and we are always looking for new inspiration.





# Rossini

The Rossini chair was designed in 1993 and has been in our collection for more than 25 years. The chair is designed in a collaboration between Knud Andreasen, the 2<sup>nd</sup> generation in Sika-Design, and the famous Japanese designer Yamakawa. The Rossini chair is our all-time most popular chair and can very well be named our signature chair.





CARLO TROLLEY | ITEM NO: 4027A



LUIS BENCH | ITEM NO: 3055A

MARCHE BASKET | ITEM NO: 4444A



# Romeo



SHELLY SHELVES | ITEM NO: 4054D



# Celia



# Piano













# Donatello



# Melody



MONET ROCKING CHAIR | ITEM NO: 1081A

ROMEO TROLLEY | ITEM NO: 4025A



# Rossini





# Blues



SALSA BARSTOOL | ITEM NO: 1016A



CHARLES COUNTER STOOL | ITEM NO: 1054A  
CHARLES STOOL | ITEM NO: 1053A



55

LUCAS MIRROR | ITEM NO: 4970D  
MICHELANGELO DAYBED | ITEM NO: 1025A

# Donatello







ALEXANDER COFFEE TABLE | ITEM NO: 9465D



DONATELLO 2-SEATER | ITEM NO: 2086A

DONATELLO SIDETABLE | ITEM NO: 4089A



# Margret



# Love Nest





ROSSINI SIDE CHAIR | ITEM NO: 1006U  
MICHEL TABLE | ITEM NO: 9452D

ROMEO TROLLEY | ITEM NO: 4025U



# Nathalia







# Caroline



# Alanis





RASMUS MIRROR | ITEM NO: 5075U  
BELLA STOOL | ITEM NO: 1008U

## Rasmus & Bella

The Rasmus mirror and Bella stool were designed in 2020 by Louise Andreasen's, 3<sup>th</sup> generation in Sika-Design, son Rasmus Andreasen. They are brand new additions to the Originals collection, and the Rasmus mirror is the first ever full-length mirror made of rattan in the collection.

# Renoir





ELLA MIRROR | ITEM NO: 5040SU & 5045SU & 5050SU



MONET CHAIR & FOOTSTOOL | ITEM NO: 1082U & 1084U

TONY SIDETABLE | ITEM NO: 4005U





MONET CHAIR & FOOTSTOOL | ITEM NO: 1082T & 1084T







# Caroline





ROSSINI ARMCHAIR | ITEM NO: 1007S  
LUCAS DESK | ITEM NO: 9470D



PIANO CHAIR | ITEM NO: 1012S

LUCAS TABLE | ITEM NO: 9474D

SHELLY SHELVES | ITEM NO: 4055D

# Monet



ROSSINI ARMCHAIR | ITEM NO: 1007C



# Rossini



# Lucas & Roger







LUCAS DESK | ITEM NO: 9470D  
ROMANTICA CHAIR | ITEM NO: 1015A



LUCAS CONSOLE | ITEM NO: 9471D

# Affaire

## INSPIRED BY PARISIAN ATMOSPHERE

The Affaire collection is designed for high-end cafés and restaurants. It is inspired by the colorful rattan chairs seen all over Paris. The rattan frames are handwoven with ArtFibre in different colors, to give the unique and classic look. The combination of natural rattan and ArtFibre provides flexibility, strength and optimal comfort. The designs in this collection are Sika-Design's own and some of them date back to the 50's and 60's.







BISTRO 2-SEATER | ITEM NO: FA-20-BLIV  
BISTRO: CHAIR | ITEM NO: FA-10-BLIV  
LYON TABLE EXTERIOR | ITEM NO: BASE3-PVØ70B



BISTRO BENCH | ITEM NO: FA-21-BLIV

# Bistro

BY FRANCO ALBINI & FRANCA HELG

The Bistro collection is a small and charming collection with a chair and two benches. It is designed in the 1950's and has a unique expression. The Bistro set is the newest addition to our Affaire collections and is available in two colors.

# Madeleine





# Monique







ISABELL BARSTOOL | ITEM NO: 9178CPWH

# Isabell







# Sofie



# Product overview and info

---

# Projects

On our website you can find our project cases. You can find a selection of projects done by our customers from all over the world. They have decorated their stunning locations with

furniture from Sika-Design. You can find inspiration whether it is for hotels, restaurants, beach clubs or private spaces. You can also fill out a contact form if you wish to get in touch.



ROSSINI CHAIRS | LE PERCHOIR, PORTE DE VERSAILLES | PHOTOCREDITS: JÉRÔME GALLAND

AVAILABLE IN:

 NATURAL

 ANTIQUE

 BLACK

STACKABLE: 

Arne Jacobsen



PARIS CHAIR | AJ-11-SU

W68 D105 H83 SH34  
26.8" 41.4" 32.7" 13.4"



CHARLOTTENBORG CHAIR | AJ-25-SU

W73 D80 H74 SH40  
28.8" 31.5" 29.2" 15.8"



CHARLOTTENBORG 2 SEATER | AJ-35-SU

L137 D80 H73 SH40  
54" 31.5" 28.8" 15.8"



CHARLOTTENBORG TABLE | AJ-45-SU

D69 H50  
27.2" 19.7"



Viggo Boesen



FOX CHAIR | VB-11-SU

W80 D88 H68 SH29  
31.5" 34.7" 26.8" 11.5"



TEDDY CHAIR | VB-17-SU

W83 D100 H88 SH40  
32.7" 39.4" 34.7" 15.8"



TEDDY FOOTSTOOL | VB-18-SU

W50 D50 H31  
19.7" 19.7" 12.3"



Franco Albini & Franca Helg



LUNA CHAIR | FA-45-SU

W102 D79 H101 SH39  
40.2" 31.2" 39.8" 15.4"



BELLADONNA SOFA | FA-95-SU

L195 D80 H81 SH45  
76.8" 31.5" 31.9" 17.8"



FRATELLINO TROLLEY | FA-23-SU

W54 D55 H73  
21.3" 21.7" 28.8"



OTTOMAN BIG | FA-65-SU

D65 H40  
25.6" 15.8"



OTTOMAN SMALL | FA-55-SU

D55 H35  
21.7" 13.8"







HANGING EGG CHAIR | ND-75-CU

W85 D75 H125 SH45  
33.5" 29.6" 49.3" 17.8"



MADAME CHAIR | ND-14-CU

W85 D80 H77 SH43  
33.5" 31.5" 30.4" 17"



RANA CHAIR | ND-13-CU

W75 D82 H74 SH35  
29.6" 32.3" 29.2" 13.8"



STAND - HANGING EGG | 9999-9997

W105 D105 H205  
41.4" 41.4" 80.8"



CHILL CHAIR | ND-20-CU

W69 D75 H65 SH33  
27.2" 29.6" 25.6" 13"



NANNY ROCKING CHAIR | ND-15-SU

W60 D100 H97 SH42  
23.7" 39.4" 38.2" 16.6"



FLEUR CHAIR | WG-17-PU

W55 D60 H100 SH47  
21.7" 23.7" 39.4" 18.6"



WENGLER CHAIR | WG-12-PU

W62 D57 H81 SH46  
24.5" 22.5" 31.9" 18.2"



TULIP SOFA | KL-30-SU

L160 D80 H81 SH37  
63" 31.5" 31.9" 14.6"



TULIP CHAIR | KL-10-SU

W60 D75 H80 SH35  
23.7" 29.6" 31.5" 13.8"





ROSSINI ARMCHAIR | 1007A  
W60 D55 H93 SH45  
23.7" 21.7" 36.7" 17.8"



ROSSINI SIDE CHAIR | 1006A  
W60 D49 H93 SH45  
23.7" 19.3" 36.7" 17.8"



LULU CHAIR | 1045A  
W54 D55 H93 SH46  
21.3" 21.7" 36.7" 18.2"



ROMANTICA CHAIR | 1015A  
W60 D61 H100 SH45  
23.7" 24.1" 39.4" 17.8"



RENOIR SWING | 3080A  
W76 D65 H113  
30" 25.6" 44.5"



MONET ROCKING CHAIR | 1081A  
W69 D99 H93 SH45  
27.2" 39" 36.7" 17.8"



MONET CHAIR | 1082A  
W67 D81 H98 SH40  
26.4" 31.9" 38.6" 15.8"



MONET FOOTSTOOL | 1084A  
W53 D42 H40  
20.9" 16.6" 15.8"



BELLA STOOL | 1008A  
D34 H45  
13.4" 17.8"



MARCHE BASKET | 4444A  
W60 D40 H30  
23.7" 15.8" 11.9"



ROMEO TROLLEY | 4025A  
D50 H72  
19.7" 28.4"



CARLO TROLLEY | 4027A  
W89 D45 H82  
35.1" 17.8" 32.3"



DONATELLO 3-SEATER | 3086A  
L215 D70 H78 SH47  
84.7" 27.6" 30.8" 18.6"



DONATELLO 2-SEATER | 2086A  
L145 D70 H78 SH47  
57.1" 27.6" 30.8" 18.6"



DONATELLO CHAIR | 1086A  
W74 D70 H78 SH47  
29.2" 27.6" 30.8" 18.6"



DONATELLO TABLE | 4089A  
W60 D60 H54  
23.7" 23.7" 21.3"



DAVINCI CHAIR | 1005A

W58 D66 H97 SH50  
22.9" 26" 38.2" 19.7"



PIANO CHAIR | 1012A

W54 D62 H93 SH45  
21.3" 24.5" 36.7" 17.8"



MELODY ARMCHAIR | 1068A

W54 D60 H97 SH47  
21.3" 23.7" 38.2" 18.6"



MELODY CHAIR | 1067A

W54 D60 H97 SH47  
21.3" 23.7" 38.2" 18.6"



BLUES COUNTER STOOL | 1013A

W52 D56 H98 SH63  
20.5" 22.1" 38.6" 24.9"



SALSA BARSTOOL | 1016A

W45 D42 H78  
17.8" 16.6" 30.8"



TONY CAFÉ TABLE | 4007A

D80 H70  
31.5" 27.6"



TONY SIDE TABLE | 4005A

D60 H60  
23.7" 23.7"



NATHALIA HEADBOARD | 5181A

W180 H207  
70.9" 81.5"



CELIA HEADBOARD | 5183A

W180 H167  
70.9" 65.8"



MICHELANGELO DAYBED | 1025A

L162 D62 H77  
24.5" 63.8" 30.4"



LUIS BENCH | 3055A

L180 D50 H40  
70.9" 19.7" 15.8"

Loom



CLASSIC CHAIR | 1072U

W67 D61 H82 SH46  
26.4" 24.1" 32.3" 18.2"



ROSSINI SIDE CHAIR | 1006C

W60 D49 H93 SH45  
23.7" 19.3" 36.7" 17.8"



ROSSINI ARMCHAIR | 1007C

W60 D55 H93 SH45  
23.7" 21.7" 36.7" 17.8"



MONET CHAIR | 1082U  
W67 D81 H98 SH40  
26.4" 31.9" 38.6" 15.8"



MONET FOOTSTOOL | 1084U  
W53 D42 H40  
20.9" 16.6" 15.8"



MONET ROCKING CHAIR | 1081U  
W69 D99 H93 SH45  
27.2" 39" 36.7" 17.8"



DAVINCI CHAIR | 1005U  
W58 D66 H97 SH50  
22.9" 26" 38.2" 19.7"



ROSSINI ARMCHAIR | 1007U  
W60 D55 H93 SH45  
23.7" 21.7" 36.7" 17.8"



ROSSINI SIDE CHAIR | 1006U  
W60 D49 H93 SH45  
23.7" 19.3" 36.7" 17.8"



ALANIS CHAIR | 1057U  
W54 D55 H89 SH45  
21.3" 21.7" 35.1" 17.8"



MARGRET CHAIR | 1003U  
W56 D64 H90 SH45  
22.1" 25.2" 35.5" 17.8"



TONY CAFÉ TABLE | 4007U  
D80 H70  
31.5" 27.6"



TONY SIDE TABLE | 4005U  
D60 H60  
23.7" 23.7"



BELLA STOOL | 1008U  
D34 H45  
13.4" 17.8"



MARCHE BASKET | 4444U  
W60 D40 H30  
23.7" 15.8" 11.9"



RENOIR SWING | 3080U  
W76 D65 H113  
30" 25.6" 44.5"



LOVE NEST | 4040SU  
W134 D140 H84 SH40  
52.8" 55.2" 33.1" 15.8"



MICHELANGELO DAYBED | 1025U  
L162 D62 H77  
24.5" 63.8" 30.4"



ROMEO TROLLEY | 4025U  
D50 H72  
19.7" 28.4"



NATHALIA HEADBOARD | 5181U  
W180 H207  
70.9" 81.5"



CELIA HEADBOARD | 5183U  
W180 H167  
70.9" 65.8"



RASMUS MIRROR | 5075U  
W76 D4 H172  
30" 1.6" 67.8"



CAROLINE 3-SEATER | 3026SU  
L197 D76 H81 SH42  
77.6" 30" 31.9" 16.6"



CAROLINE CHAIR | 1026SU  
W70 D76 H81 SH42  
27.6" 30" 31.9" 16.6"



DONATELLO TABLE | 4089SU  
W60 D60 H54  
23.7" 23.7" 21.3"



ELLA MIRRORS | 5040SU,  
5045SU, 5050SU  
D40 | D45 | D50  
15.8" | 17.8" | 19.7"



ROSSINI ARMCHAIR | 1007T  
W60 D55 H93 SH45  
23.7" 21.7" 36.7" 17.8"



ROSSINI SIDE CHAIR | 1006T  
W60 D49 H93 SH45  
23.7" 19.3" 36.7" 17.8"



MONET CHAIR | 1082T  
W67 D81 H98 SH40  
26.4" 31.9" 38.6" 15.8"



MONET FOOTSTOOL | 1084T  
W53 D42 H40  
20.9" 16.6" 15.8"



RENOIR SWING | 3080T  
W76 D65 H113  
30" 25.6" 44.5"



PIANO CHAIR | 1012T  
W54 D62 H93 SH45  
21.3" 24.5" 36.7" 17.8"



ROSSINI ARMCHAIR | 1007S  
W60 D55 H93 SH45  
23.7" 21.7" 36.7" 17.8"



PIANO CHAIR | 1012S  
W54 D62 H93 SH45  
21.3" 24.5" 36.7" 17.8"



MONET CHAIR | 1082S  
W67 D81 H98 SH40  
26.4" 31.9" 38.6" 15.8"



MONET FOOTSTOOL | 1084S  
W53 D42 H40  
20.9" 16.6" 15.8"



CAROLINE 3-SEATER | 3026S  
L197 D76 H81 SH42  
77.6" 30" 31.9" 16.6"



CAROLINE CHAIR | 1026S  
W70 D76 H81 SH42  
27.6" 30" 31.9" 16.6"



DONATELLO TABLE | 4089S  
W60 D60 H54  
23.7" 23.7" 21.3"



SOFIE CHAIR | 9166WHGR  
W50 D60 H89 SH45  
19.7" 23.7" 35.1" 17.8"



SOFIE CHAIR | 9166BLBL  
W50 D60 H89 SH45  
19.7" 23.7" 35.1" 17.8"



SOFIE CHAIR | 9166WHSG  
W50 D60 H89 SH45  
19.7" 23.7" 35.1" 17.8"



SOFIE CHAIR | 9166WHLU  
W50 D60 H89 SH45  
19.7" 23.7" 35.1" 17.8"



SOFIE CHAIR | 9166SGLUWH  
W50 D60 H89 SH45  
19.7" 23.7" 35.1" 17.8"



ISABELL SIDE CHAIR | 9180CPWH  
W48 D59 H92 SH45  
18.9" 23.3" 36.3" 17.8"



ISABELL SIDE CHAIR | 9180WHCP  
W48 D59 H92 SH45  
18.9" 23.3" 36.3" 17.8"



ISABELL ARMCHAIR | 9181CPWH  
W54 D57 H92 SH45  
21.3" 22.5" 36.3" 17.8"



ISABELL ARMCHAIR | 9181WHCP  
W54 D57 H92 SH45  
21.3" 22.5" 36.3" 17.8"



ISABELL ARMCHAIR | 9181WHBR  
W54 D57 H92 SH45  
21.3" 22.5" 36.3" 17.8"



MADELEINE CHAIR | 9187CPWH  
W60 D62 H80 SH45  
23.7" 24.5" 31.5" 17.8"



MADELEINE CHAIR | 9187WHCP  
W60 D62 H80 SH45  
23.7" 24.5" 31.5" 17.8"



MONIQUE ARMCHAIR | 9186CPWH  
W54 D62 H93 SH46  
21.3" 24.5" 36.7" 18.2"



MONIQUE CHAIR | 9185CPWH  
W54 D62 H93 SH46  
21.3" 24.5" 36.7" 18.2"



ISABELL BARSTOOL | 9178CPWH  
W55 D55 H122 SH76  
21.7" 21.7" 48.1" 30"



ISABELL BENCH | 9281CPWH  
L162 D55 H91 SH45  
63.8" 21.7" 35.9" 17.8"



SIMONE STOOL | 9182  
D40 H45  
15.8" 17.8"



SIMONE COUNTER STOOL | 9183  
D40 H68  
15.8" 26.8"



SIMONE BARSTOOL | 9184  
D40 H78  
15.8" 30.8"



BISTRO CHAIR | FA-10-BLIV  
W52 D58 H85 SH45  
20.5" 22.9" 33.5" 17.8"



BISTRO 2-SEATER | FA-20-BLIV  
L110 D57 H85 SH45  
43.4" 22.5" 33.5" 17.8"



BISTRO BENCH | FA-21-BLIV  
L106 D44 H67 SH45  
41.8" 17.4" 26.4" 17.8"

Franco Albini & Franca Helg



# Colors

We offer to produce our models in your combination of colors. Be aware of minimum quantities and time of delivery. See the models to the left for our standard models in stock.

## WEAVING COMBINATIONS



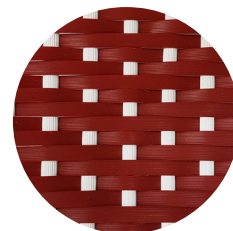
WHITE W/CAPPUCCINO  
CPWH



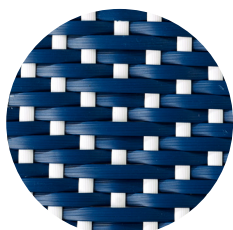
GREY W/WHITE DOT  
WHGR



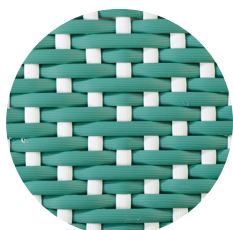
CAPPUCCINO W/WHITE DOT  
WHCP



BURGUNDY RED W/WHITE DOT  
WHBR



NAVY BLUE W/WHITE DOT  
WHLU



SALVIE GREEN W/WHITE DOT  
WHSG



IVORY W/BLACK DOT  
BLIV



BLACK  
BLBL

## FRAMES

WH - WHITE



GR - GREY



CP - CAPPUCCINO



BR - BURGUNDY RED



LU - NAVY BLUE



SG - SALVIE GREEN



IV - IVORY



BL - BLACK





MICHEL TABLE | 9452D  
D120 H72  
47.3" 28.4"



MICHEL TABLE | 9458D  
D80 H72  
31.5" 28.4"



SHELLY SHELVES | 4055D  
W100 D40 H211  
39.4" 15.8" 83.1"



SHELLY SHELVES | 4054D  
W100 D40 H100  
39.4" 15.8" 39.4"



LUCAS DESK | 9470D  
L110 D60 H72.5  
43.4" 23.7" 28.6"



LUCAS EXT. TABLE | 9474D  
L200(280) D100 H72.5  
78.8(110.3)" 39.4" 28.6"



LUCAS TABLE | 9444D  
L240 D100 H72.5  
94.5" 39.4" 28.6"



LUCAS TABLE | 9472D  
L180 D100 H72.5  
70.9" 39.4" 28.6"



LUCAS CONSOLE | 9471D  
L140 D40 H90  
55.2" 15.8" 35.5"



ALFRED COFFEE TABLE  
9468D  
W80 D80 H40  
31.5" 31.5" 15.8"



ALFRED COFFEE TABLE  
9467D  
W60 D60 H40  
23.7" 23.7" 15.8"



ALFRED COFFEE TABLE  
9462D  
W140 D55 H40  
55.2" 21.7" 15.8"



ALEXANDER COFFEE TABLE  
9465D  
W130 D66 H40  
51.2" 26" 15.8"



LUCAS BENCH | 9222D  
L100 D26 H45  
39.4" 10.3" 17.8"



CHARLES COUNTER STOOL | 1054D  
W48 D30 H68  
18.9" 11.9" 26.8"



CHARLES STOOL | 1053D  
W48 D30 H49  
18.9" 11.9" 19.3"



ROGER STOOL | 9125U  
D40 H51  
15.8" 20.1"



LUCAS MIRROR | 4990D  
W90 H180  
35.5" 70.9"



LUCAS MIRROR | 4970D  
W70 H100  
27.6" 39.4"

## Teak items

Our interior teak items are made of old reclaimed teakwood. It can be from old houses, old fisher boats or old rail road supports. The wood will appear with reparations and fillings.





JULIAN COFFEE TABLE | 9464U  
L140 D40 H41  
55.2" 15.8" 16.2"



GEORGE BENCH | 9240U  
L220 D40 H45  
86.7" 15.8" 17.8"



JULIAN COFFEE TABLE | 9469U  
L120 D120 H41  
47.3" 47.3" 16.2"



GEORGE ROUND TABLE | 9446U  
D160 H72  
63" 28.4"



GEORGE ROUND TABLE | 9442U  
D120 H72  
47.3" 28.4"



GEORGE EXT. TABLE | 9480U  
L200(280) D100 H72.5  
78.8"(110.3") 39.4" 28.6"



COLONIAL TABLE | 9475U  
L200 D100 H72.5  
78.8" 39.4" 28.6"



COLONIAL TABLE | 9460U  
L160 D100 H72.5  
63" 39.4" 28.6"



GEORGE TABLE | 9440U  
L240 D100 H72.5  
94.5" 39.4" 28.6"



LYON | PCØ80-BASE3  
D80 H74  
31.5" 29.2"



LYON | PC70X70-BASE3  
D70 H74  
27.6" 29.2"



LYON | PVØ70B-BASE3  
D70 H74  
27.6" 29.2"



NICOLE | 9484BL4  
TEAK TABLE TOP | PC70X70  
W70 D70 H74  
27.6" 27.6" 29.2"  
ALSO AVAILABLE W/ ROUND TOP



NICOLE | 9484TA2  
TEAK TABLE TOP | PC70X70  
W70 D70 H74  
27.6" 27.6" 29.2"  
ALSO AVAILABLE W/ ROUND TOP



NICOLE | 9484WH1  
TEAK TABLE TOP | PC70X70  
W70 D70 H74  
27.6" 27.6" 29.2"  
ALSO AVAILABLE W/ ROUND TOP



HOTEL SANDERS, DENMARK

# Upholstery and cushions

MANUFACTURED IN DENMARK

The quality of good craftsmanship is also felt in our cushions. We draw on great experience and expertise when deciding the shape and characteristics of each cushion. Since the 1950's when Ankjær started his furniture production, we have developed customized cushions for all our models in our own facilities in Denmark.

Our high-quality upholstery and seat cushions are made to order and can be chosen from a broad variety of high-quality fabrics and styles – even your own fabric. We are also capable of making custom made cushions. If you have a special request or a specific need, feel free to contact us. We make cushions for interior and exterior use.

# Download

Our image bank is located on our website. Here you have access to all relevant files and images. This includes high-resolution images, manuals, 3D files and much more.

## IMAGES IN HIGH RESOLUTION

Images of all products both pack-shots and in-situ can be found in high resolution. Pack-shots with shadows can also be found in web-format.

## E-CATALOGUES

Catalogues are available on our website as iPapers. They are also available as PDF's in our image bank and can be down-loaded in high and low resolution.

## 3D FILES

Selected models are available in 3D. All files are provided in OBJ format so they can be imported directly into your project. We are continuously expanding our 3D assortment.

## FACT SHEETS

Our factsheets contain relevant information about our furniture. You will find factsheets for selected bestselling items and we are continuously expanding our selection.

## FABRIC COLOUR & STYLES

Fabric styles and colours are available as downloads in our image bank. They are divided into indoor and outdoor collections.

## COLOUR & MATERIAL SHEETS

For each collection we have a sheet with a color and material overview. They are available as high resolution PDF's and are easy to print.



SIKA-DESIGN - RYNKEBYVEJ 245 - DK-5350 RYNKEBY - DENMARK  
PHONE: +45 6615 4224 - INFO@SIKA-DESIGN.COM - WWW.SIKA-DESIGN.COM